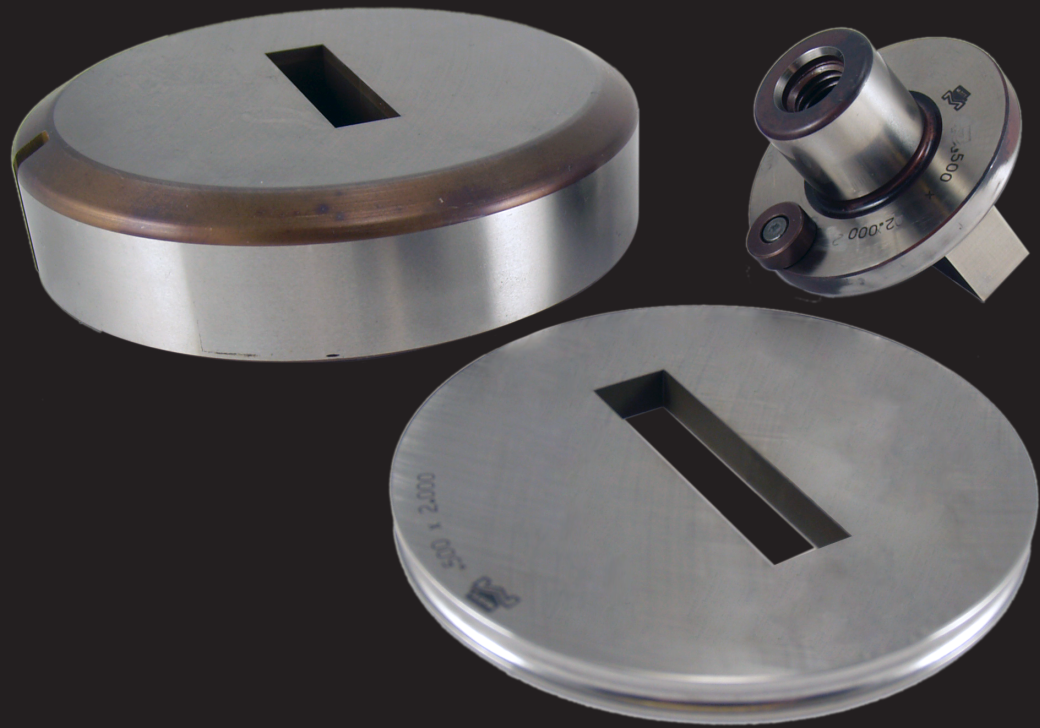


Superior Solutions for Sheet Metal Fabricators

AMADA STYLE THIN TURRET TOOLING



PN 2011

WORLDWIDE HEADQUARTERS:

1295 Lund Boulevard, Anoka, Minnesota 55303 USA

Tel 763.421.0230 Fax 763.421.0285

Toll Free: Tel 800.328.4492 Fax 800.541.0285

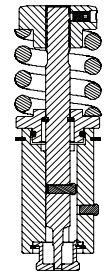
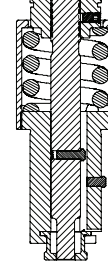
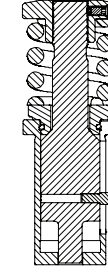
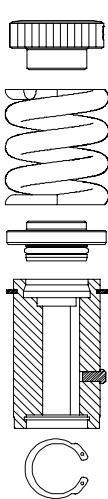
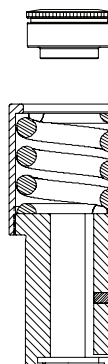
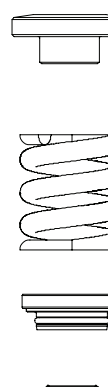



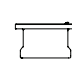
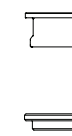
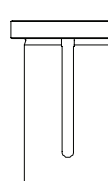
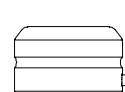
mate.com

: " | +7.910.790.39.51 | info@mltech.ru | www.mltech.ru

MATE[®]
M
**PRECISION
TOOLING**

TRUSTED | QUALITY | SERVICE | SOLUTIONS

AMADA STYLE THIN TURRET TOOLING FOR 1-1/4" STATION

	1/2" Snap-Apart	5/8" Drop-In	1-1/4" Full Body
Upper Assembly	<p>Round</p> <p>Shape</p> 	<p>Round</p> <p>Shape</p> 	<p>Round</p> <p>Shape</p> 
Hardware	<p>Punch Head MATE00393</p> <p>Spring MATE00007</p> <p>Spring Retainer (with O-ring) MATE00011</p> <p>Support Ring SRI00003</p> <p>Guide—Round MATE00014</p> <p>Guide—Shape MATE00016</p> <p>Stripper Retaining Ring SRI00004</p> 	<p>Punch Head MATE00386</p> <p>Canister and Guide Assembly MATE00391</p> 	<p>Punch Head MATE00388</p> <p>Spring MATE00007</p> <p>Spring Retainer (with O-Ring) MATE00003</p> <p>Punch Shim MATE00333</p> 
Punch	<p>Round** PCSA0A</p> <p>Shape** PCSA_A</p> <p>Ring*** (2 required) Maxima® Coating SRI00002</p> 	<p>Round PDSX0A</p> <p>Shape PDSX_A</p> <p>Maxima® Coating</p> 	<p>Round PBSB0A</p> <p>Shape PBSB_A</p> <p>Maxima® Coating</p> 
Stripper	<p>Round** SCSA0A</p> <p>Shape** SCSA_A</p> 	<p>Round SDSX0A</p> <p>Shape SDSX_A</p> <p>Round** SESX0A</p> <p>Shape** SESX_A</p> 	<p>Round SBSB0A</p> <p>Shape SBSB_A</p> 
Die	<p>Round DASB00</p> <p>Shape DASB_0</p> <p>Shim Pack MSAB</p> 		

** can be used with existing 1/2" drop-in style holders.
 *** snap ring must be removed for use in Drop-In guide assembly.



[Dimensions in Inches(mm)]

STANDARD PRODUCT FEATURES AND BENEFITS

Punch Head—Superior flatness for precise distribution of punching forces. Knurled edges for secure handling. Full compatibility with existing tooling inventory.

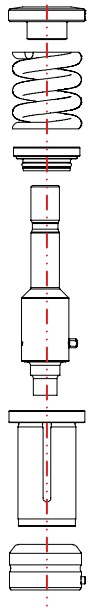
Stripping Spring—precise coil specification for optimum stripping performance. Shot peened surface for extended service life and maximum reliability.

Spring Retainer—precisely machined to seat securely on the punch shoulder to reduce punching stress and provide reliable operation.

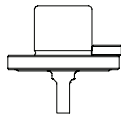
Punch—DuraSteel™ with superior hardness and toughness for maximum tool life. Hardened double-D key for precise orientation of shaped tools. 1/4 degree back taper and near polished punch flanks to reduce friction. Maxima® coating available for extreme applications.

Stripper—Hardened and ground for superior angularity and concentricity. Smooth rounded edges to eliminate sheet marking and improve piece part quality.

Slug Free® Die—Slug Free die geometry eliminates slug pulling to improve piece part quality and increase tool life. Highly wear-resistant tool steel provides optimum balance between hardness and toughness, for extended service life.



AMADA STYLE THIN TURRET TOOLING FOR 3-1/2" STATION



DIAGONAL	SHAPE	PART NUMBER
1.251 to 1.500	Round	PKSDOA
1.501 to 2.500	Shape	PKSD_A
2.501 to 3.500	Round	PKSFOA
	Shape	PKSF_A
	Round	PKSHOA
	Shape	PKSH_A

Maxima® Coating



SHAPE	PART NUMBER
Round	SKSDOA
Shape	SKSD_A



SHAPE	PART NUMBER
Round	DASDOO
Shape	DASD_O
Shim Pack	MSAD

Add-Ons

GENERAL

Radius Corner	Add 25%	To punch, stripper and die
Non-Standard Straight Before Radius (SBR)	Add 25%	To punch
Special Angle Setting	Add 25%	To punch and die
Special Angle Setting	Add 25%	1/2, 5/8 and 1-1/4" stripper

OPTIONAL SHEAR (LIMITED OPTIONS)

Small Diameter Round Tools	No Charge	
Diameter 0.031 (0.79) to 0.061 (1.55)	Add 25%	To punch, stripper and die
Diameter 0.062 (1.56) to 0.092 (2.34)	Add 10%	To punch, stripper and die

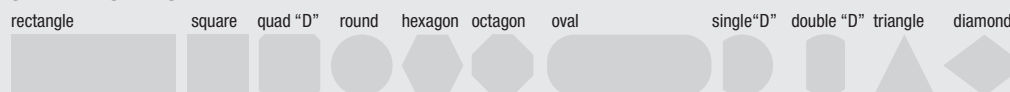
NARROW WIDTH SHAPED TOOLS

Widths under 0.079 (2.00)	Add 25%	To punch, stripper and die
---------------------------	----------------	----------------------------

Accessories

- Urethane Slug Ejector—3.00mm
URE40002 (12 minimum)
- Urethane Slug Ejector—6.00mm
URE40010 (12 minimum)
- Snap Ring Pliers
MIS61129
- 2.5mm Hex Wrench
MIS98896
- Medium India Oil Stone
STO29807
- Replacement 3-1/2" punch key bushing
MATE00318

STANDARD SHAPES:



[Dimensions in Inches(mm)]





visit mate.com

MATE PRECISION TOOLING

WORLDWIDE HEADQUARTERS:

1295 Lund Boulevard, Anoka, Minnesota 55303 USA
Tel 763.421.0230 Fax 763.421.0285 mate.com

EUROPEAN HEADQUARTERS:

Gablonzer Str, 25, 61440 Oberursel, Germany
Tel +49.6171.8878.000 Fax +49.6171.8878.001 mate.de

© The Mate Logo is a registered trademark of Mate Precision Tooling Inc.
Amada is a trademark of Amada International

©2011 Mate Precision Tooling Inc. | +7.910.790.39.51 | info@mltech.ru | www.mltech.ru

LIT00336 Rev C